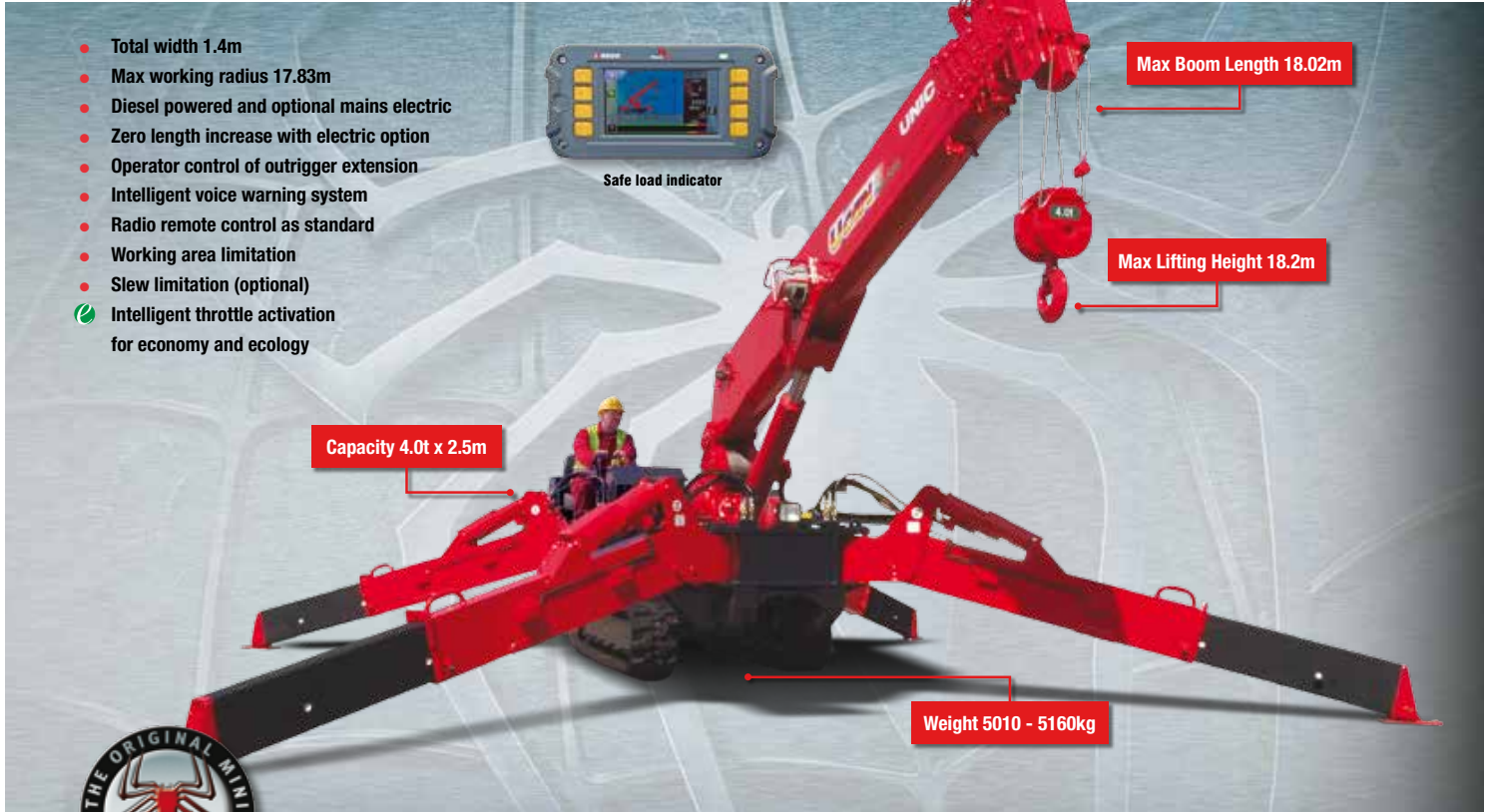


URW-547 (4.0t x 2.5m)



- Total width 1.4m
- Max working radius 17.83m
- Diesel powered and optional mains electric
- Zero length increase with electric option
- Operator control of outrigger extension
- Intelligent voice warning system
- Radio remote control as standard
- Working area limitation
- Slew limitation (optional)
- Intelligent throttle activation for economy and ecology

The URW-547 offers extended reach, providing a maximum lifting height of 18.2 metres and a maximum lifting capacity of 4 tonnes as standard on the main boom. The outrigger footprint remains the same as the URW-506, maintaining its compact dimensions. An option of additional length is given with a quickly installed searcher hook, with angles varying for 0° to 60° and a maximum capacity of 500kgs.

CRANE SPECIFICATIONS

Crane capacity	capacity:	4.0t x 2.5m
Max working radius	max:	17.83m
Max lifting height	approx:	18.2m
Rope length	max:	22.32m (4 fall), 46.13m (2 fall), 93.76m (1 fall)
Dimensions	folded:	4955mm (l) x 1400mm (w) x 1980mm (h)
Weight	unladen:	5010kg (5160kg with electric option)
Point loadings		Due to the many variables involved, point loadings are only available on request
Hook speed	approx:	14m/min (with 5 layers and 4 falls)
Telescopic system	boom length: telescoping speed: boom type:	3.99 - 18.02m 14.03m/35 seconds 7 section hydraulically telescoping boom, hexagonal box construction
Derricking angle/speed	approx:	0 - 80°/18.0 seconds
Slewing angle/speed	approx:	360° (continuous) 2.5min rpm
Traction system	drive: travel speed: gradeability: track ground length: track ground pressure: track width:	hydrostatic 2-speed, stepless forward and reverse 0 - 3km/h ± 20° (vertical) 20° (traverse) 1750mm 47kPa (0.48kg/cm ²) 300mm
Engine	manufacturer: fuel: maximum output: starting method: tank capacity:	Mitsubishi / Yanmar diesel (electric dual power option) 17.5kW (23.8PS) / 2100min rpm electric 40 litres
Electric motor	power: voltage:	7.5kW 400v AC 50/60Hz
Standard equipment		computer controlled moment limiter (safe load indicator), radio remote control, overwinding alarm, computer controlled intelligent voice warning system, multi-function operation by radio remote control, intelligent throttle activation, automatic hook stow, overload warning alarms, overload warning lamps, working area limitation
Optional equipment		1 fall hook block, 2 fall hook block, mains electric dual power (400v), low marking tracks, slew limitation, searcher hook small 500kg, radio remote control with feedback display, data logging

REMOTES



Standard radio remote control

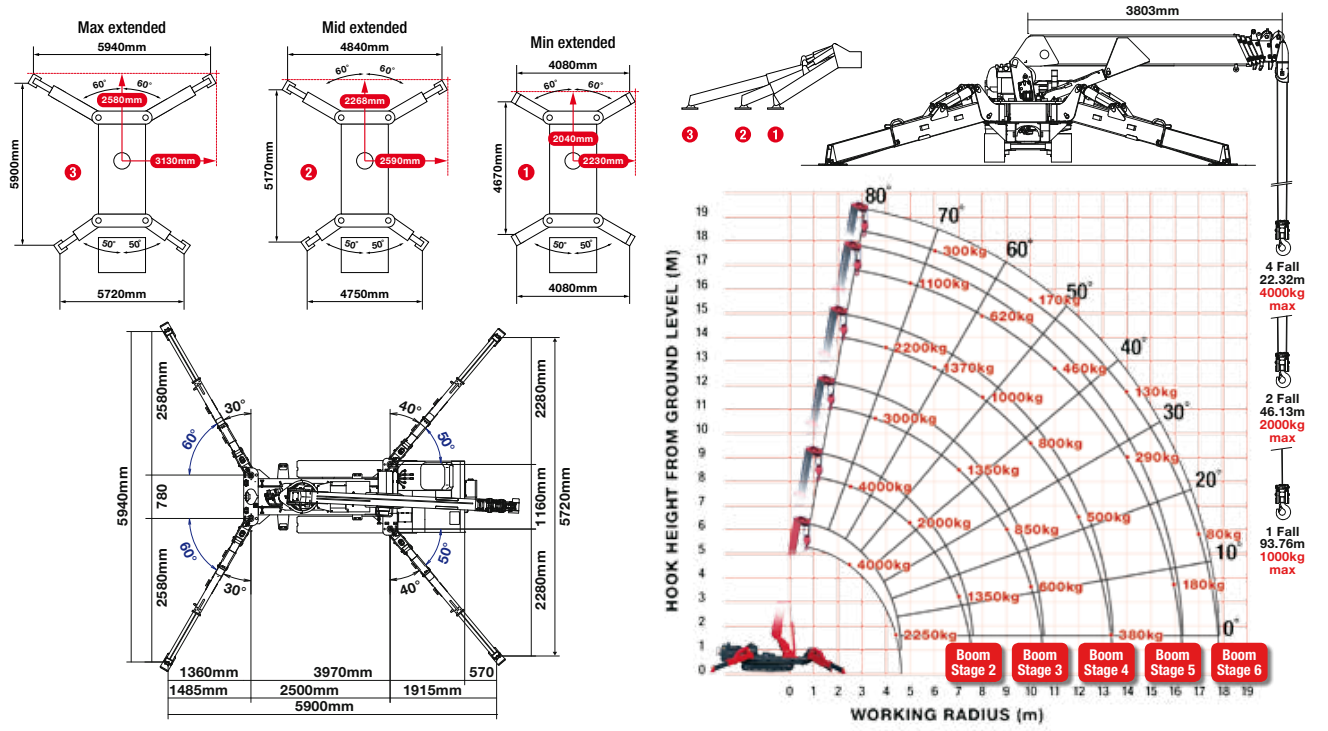


Optional radio remote control with digital feedback

MINI SPIDER CRANE



RATED LOADS & OUTRIGGER POSITIONS



SECOND STAGE EXTENDED 3.99 - 7.7M BOOM LENGTH		3.99	4.0	4.5	5.0	5.5	6.0	7.0	7.25	7.51
Working radius	m	up to 2.5	2.7	3.0	3.5	4.0	4.5	5.0	5.5	6.0
Outrigger	kg	4,000	3,850	3,500	3,000	2,550	2,250	2,000	1,800	1,630
	kg	4,000	3,850	3,500	3,000	2,550	2,200	1,850	1,630	1,400
	kg	4,000	3,850	3,500	3,000	2,550	2,100	1,640	1,320	1,080

THIRD STAGE EXTENDED 7.7 - 10.66M BOOM LENGTH		3.5	4.0	5.0	6.0	7.0	8.0	9.0	10.0	10.20	10.47
Working radius	m	up to 3.5	4.0	5.0	6.0	7.0	8.0	9.0	10.0	10.20	10.47
Outrigger	kg	3,000	2,550	2,000	1,650	1,350	1,100	850	600	600	520
	kg	3,000	2,550	1,850	1,400	1,100	830	630	490	490	430
	kg	3,000	2,550	1,650	1,150	840	620	460	350	350	300

FOURTH STAGE EXTENDED 10.66 - 13.57M BOOM LENGTH		4.0	4.5	5.0	6.0	7.0	8.0	9.0	10.0	11.0	12.0	13.0	13.38
Working radius	m	up to 4.0	4.5	5.0	6.0	7.0	8.0	9.0	10.0	11.0	12.0	13.0	13.38
Outrigger	kg	2,200	1,900	1,700	1,370	1,150	1,000	900	800	660	500	410	380
	kg	2,200	1,800	1,600	1,300	1,050	850	700	550	450	360	290	260
	kg	2,200	1,800	1,600	1,150	800	650	520	400	320	250	190	170

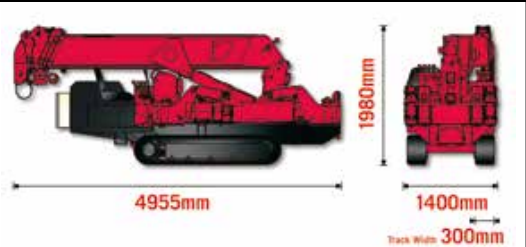
FIFTH STAGE EXTENDED 13.57 - 16.48M BOOM LENGTH		5.0	5.5	6.0	7.0	8.0	9.0	10.0	11.0	12.0	13.0	14.0	15.0	16.0	16.29
Working radius	m	up to 5.0	5.5	6.0	7.0	8.0	9.0	10.0	11.0	12.0	13.0	14.0	15.0	16.0	16.29
Outrigger	kg	1,100	950	880	730	620	570	520	460	410	350	290	230	180	170
	kg	1,100	950	880	700	600	520	450	400	350	300	250	190	150	140
	kg	1,100	950	850	700	500	420	390	340	290	230	180	140	100	100

SIXTH STAGE EXTENDED 16.48 - 18.02M BOOM LENGTH		6.0	7.0	8.0	9.0	10.0	11.0	12.0	13.0	14.0	15.0	16.0	17.0	17.83
Working radius	m	up to 6.0	7.0	8.0	9.0	10.0	11.0	12.0	13.0	14.0	15.0	16.0	17.0	17.83
Outrigger	kg	300	250	230	200	170	160	150	140	130	120	110	80	50
	kg	300	250	230	200	170	160	150	140	130	120	110	80	50
	kg	300	250	230	200	170	160	150	140	130	120	110	80	50

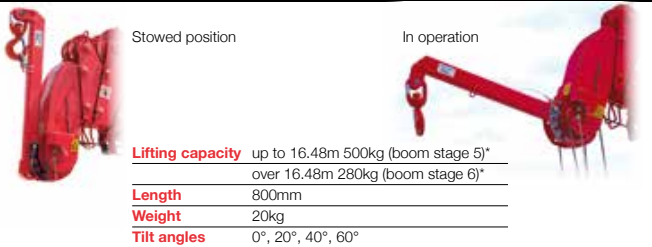
500kg SEARCHER HOOK RADIUS RATED (UP TO 16.48M)		NET RATED LOADS (kg)					
WORKING RADIUS (M)	OUTRIGGER POSITIONS			WORKING RADIUS (M)	NET RATED LOADS (kg)		
	MAX	MID	MIN		MAX	MID	MIN
3.0	500	500	500	3.0	280	280	280
4.0	500	500	500	4.0	280	280	280
5.0	500	500	500	5.0	280	280	280
6.0	500	500	500	6.0	280	280	280
7.0	400	350	320	7.0	210	210	210
8.0	330	280	220	8.0	170	170	170
9.0	270	230	180	9.0	130	130	130
10.0	220	190	130	10.0	100	100	100
11.0	180	160	100	11.0	NOT ALLOWED		
12.0	150	130					
13.0	130	100					
14.0	120						
15.0	110						
16.0	100						

500kg SEARCHER HOOK RADIUS RATED (OVER 16.48M)		NET RATED LOADS (kg)					
WORKING RADIUS (M)	OUTRIGGER POSITIONS			WORKING RADIUS (M)	NET RATED LOADS (kg)		
	MAX	MID	MIN		MAX	MID	MIN
3.0	280	280	280	3.0	280	280	280
4.0	280	280	280	4.0	280	280	280
5.0	280	280	280	5.0	280	280	280
6.0	280	280	280	6.0	280	280	280
7.0	210	210	210	7.0	210	210	210
8.0	170	170	170	8.0	170	170	170
9.0	130	130	130	9.0	130	130	130
10.0	100	100	100	10.0	100	100	100
11.0	NOT ALLOWED			11.0	NOT ALLOWED		
12.0							
13.0							
14.0							
15.0							
16.0							

DIMENSIONS



SEARCHER HOOK SMALL - 500kg



* Please note: The URW-547 lifting capacity information is based on boom stages, not boom sections.