

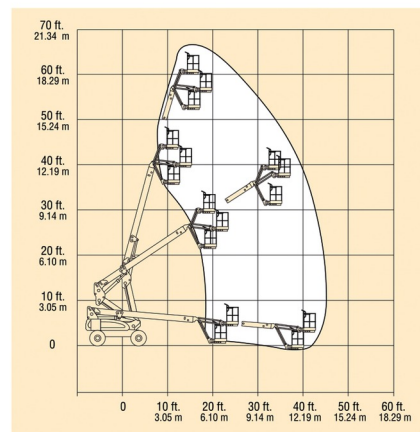


ARTICULATED BOOMS ELECTRIC

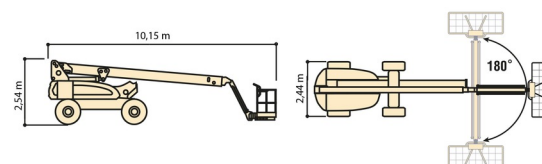
JLG E600JP



Hydraulic platforms and scissor lifts



» JLG E600JP



Working height	20,39 m
Loading capacity	237 kg
Length	10,15 m
Width	2,44 m
Height	2,54 m
Weight	7000 kg

ACCESSORIES

- Operator - CAT 1



- 1 socket in working platform
- Platform load indoors: 2 persons
- Platform load outdoors: 2 persons
- Battery
- Anti-entrapment system

Consult our website www.dumarent.be for the technical data sheet

If you have any questions about this machine or any accessory, please call us at +32(0)56 222 111 or send us an email.

There will be a cleaning and environmental charge if the machine is returned dirty or full of mud.

- * All prices are VAT excluded.
- * A deposit may be requested.