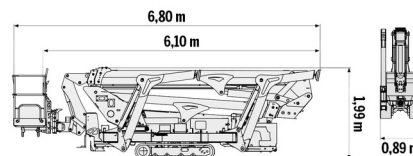
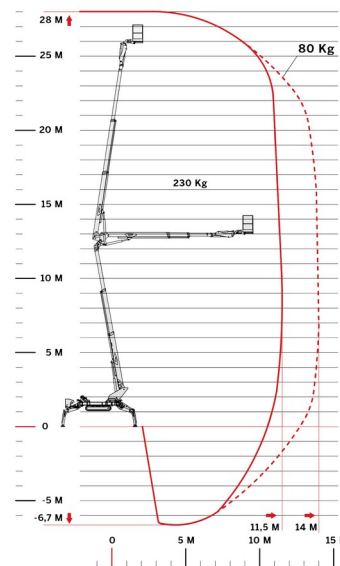


AERIAL WORK PLATFORM

CMC S28



Hydraulic platforms and scissor lifts









» CMC S28

Working height	28,00 m
Loading capacity	230 kg
Length	6,80 m
Width	0,89 m
Height	1,99 m
Weight	4175 kg

ACCESSORIES

- Operator - CAT 1
- Synthetic ramps



-  4 Automatic Stabilisers
-  1 socket in working platform
-  Radiographic remote control
-  Platform load indoors: 2 persons
-  Platform load outdoors: 2 persons
-  Diesel engine + electric engine

Non-marking tracks / this machine can work negative / variable stamping

Consult our website www.dumarent.be for the technical data sheet
 If you have any questions about this machine or any accessory, please call us at +32(0)56 222 111 or send us an email.
 There will be a cleaning and environmental charge if the machine is returned dirty or full of mud.

* All prices are VAT excluded.
 * A deposit may be requested.



duma rent
on different places !

Duma Rent bvba - Torkonjestraat 23, BE-8510 Marke
 T +32(0)56 222 111 • Fax +32(0)56 716 141
 info@dumarent.be • www.dumarent.be

Region West-Flanders
056 222 111

Region East-Flanders
09 228 28 22

Region Antwerp
03 887 87 81

Region Brussels
02 705 05 09

Region Charleroi
071 33 36 38