



TELESCOPIC CRAWLER BOOM LIFT

AICHI SR21A



» AICHI SR21A

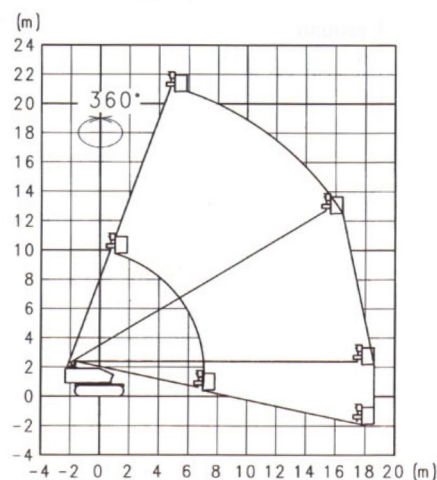
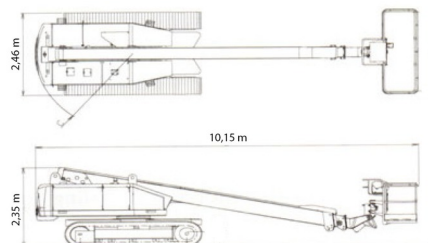
Working height	23,00 m
Loading capacity	227 kg
Length	10,15 m
Width	2,46 m
Height	2,35 m
Weight	14900 kg

ACCESSORIES

- Operator - CAT 1
- Fuel tank 1100 l with pump



Hydraulic platforms and scissor lifts



Generator + 4 sockets



Diesel engine



Platform load indoors: 2 persons



Platform load outdoors: 2 persons

With rubber tracks.

Consult our website www.dumarent.be for the technical data sheet

If you have any questions about this machine or any accessory, please call us at +32(0)56 222 111 or send us an email.

There will be a cleaning and environmental charge if the machine is returned dirty or full of mud.

* All prices are VAT excluded.

* A deposit may be requested.