



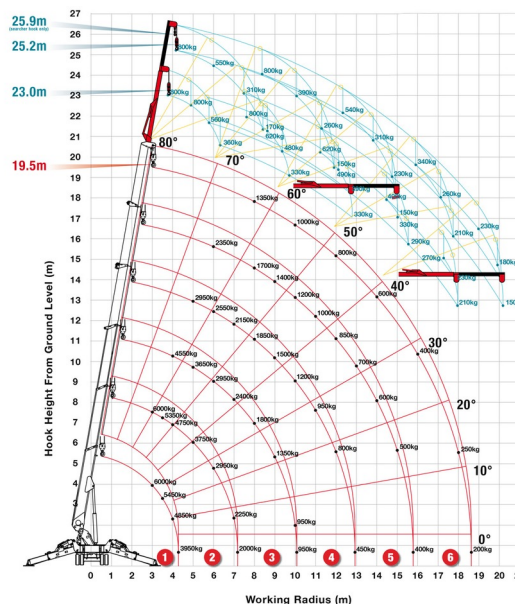
MINI SPIDER CRANE WITH OUTRIGGERS

Construction and earthmoving machines

UNIC URW-706-2



» UNIC URW-706-2



Lifting capacity	6000 kg
Reach height	18600 mm
Length	5,61 m
Width	1,67 m
Height	2,25 m
Weight	8310 kg

ACCESSORIES

- Operator- CAT 3
- Glass Vacuum lifter POWR-GRIP 635 kg
- Synthetic ramps



Radiographic remote control



Diesel engine + electric engine

Voltage electric motor: 380V

If you have any questions about this machine or any accessory, please call us at +32(0)56 222 111 or send us an email.

There will be a cleaning and environmental charge if the machine is returned dirty or full of mud.

- * All prices are VAT excluded.
- * A deposit may be requested.