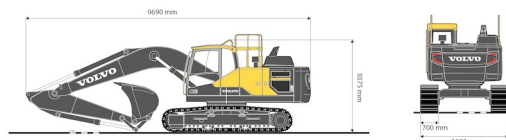
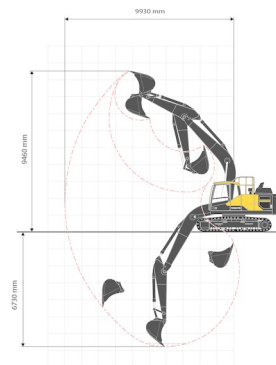




EXCAVATOR ON CRAWLERS

Construction and earthmoving machines

VOLVO EC220EL



» VOLVO EC220EL

Tonnage	22 ton
Length	9,69 m
Width	3,09 m
Height	3,08 m
Weight	22160 kg

ACCESSORIES

- Fuel tank 1100 l with pump
- Tilttable bucket 14 - 25 tons
- Clamshell bucket 14 - 25 tons
- Filter overpressure system 14 - 36 tons



Exceptional transport



Overpressure air filtration system



Diesel engine

Quick coupler CW30. Height of guard rail : 3,27 m. With buckets: width 60, 120 (with teeth) & 200 cm

If you have any questions about this machine or any accessory, please call us at +32(0)56 222 111 or send us an email.

There will be a cleaning and environmental charge if the machine is returned dirty or full of mud.

* All prices are VAT excluded.

* A deposit may be requested.

duma rent
on different places !

Duma Rent bvba - Torkonjestraat 23, BE-8510 Marke
T +32(0)56 222 111 • Fax +32(0)56 716 141
info@dumarent.be • www.dumarent.be

Region West-Flanders
056 222 111

Region East-Flanders
09 228 28 22

Region Antwerp
03 887 87 81

Region Brussels
02 705 05 09

Region Charleroi
071 33 36 38