

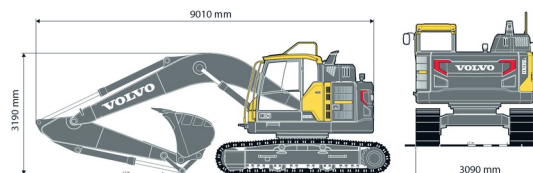
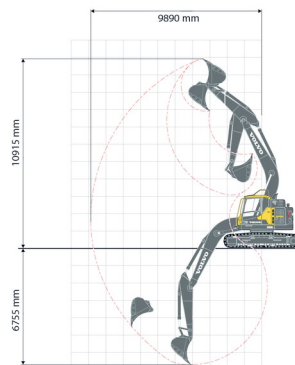


EXCAVATOR ON CRAWLERS

**VOLVO**

Construction and earthmoving machines

# VOLVO ECR235EL



» VOLVO ECR235EL

Tonnage	25 ton
Length	9,01 m
Width	3,09 m
Height	3,19 m
Weight	25040 kg

ACCESSORIES

- Sorting grab 20 - 25 tons
- Fuel tank 1100 l with pump
- Tilttable bucket 14 - 25 tons
- Clamshell bucket 14 - 25 tons
- Hammer GH7 20 - 25 tons
- Filter overpressure system 14 - 36 tons



Exceptional transport



Overpressure air filtration system



Diesel engine

Quick coupler CW30. Delivered with buckets: width 60 cm, 120 cm (with teeth) and 200 cm.

If you have any questions about this machine or any accessory, please call us at +32(0)56 222 111 or send us an email.

There will be a cleaning and environmental charge if the machine is returned dirty or full of mud.

\* All prices are VAT excluded.

\* A deposit may be requested.