

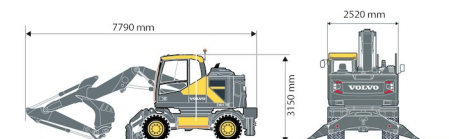
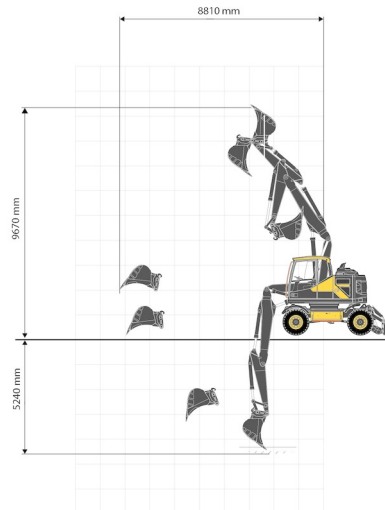


WHEEL EXCAVATOR

# VOLVO EWR150E

**VOLVO**

Construction and earthmoving machines



» VOLVO EWR150E

Tonnage	17 ton
Length	7,79 m
Width	2,52 m
Height	3,15 m
Weight	17000 kg

ACCESSORIES

- Hammer GH7 14 - 18 tons
- Fuel tank 1100 l with pump
- Tilttable bucket 14 - 25 tons
- Clamshell bucket 14 - 25 tons
- Sorting grab 14 - 18 tons
- Filter overpressure system 14 - 36 tons



Overpressure air filtration system



Diesel engine

Quick coupler CW30. Triple boom. Delivered with buckets: width 60 cm, 100 cm (with teeth) & 180 cm.

If you have any questions about this machine or any accessory, please call us at +32(0)56 222 111 or send us an email.

There will be a cleaning and environmental charge if the machine is returned dirty or full of mud.

- \* All prices are VAT excluded.
- \* A deposit may be requested.

**duma rent**  
on different places !

Duma Rent bvba - Torkonjestraat 23, BE-8510 Marke  
T +32(0)56 222 111 • Fax +32(0)56 716 141  
info@dumarent.be • www.dumarent.be

Region West-Flanders  
**056 222 111**

Region East-Flanders  
**09 228 28 22**

Region Antwerp  
**03 887 87 81**

Region Brussels  
**02 705 05 09**

Region Charleroi  
**071 33 36 38**