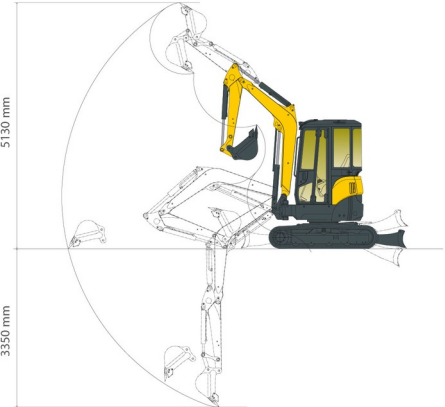




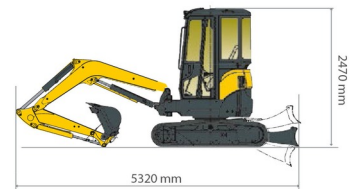
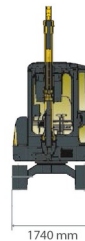
MINI EXCAVATOR CRAWLER

Construction and earthmoving machines

YANMAR VIO38-6



» YANMAR VIO38-6



Tonnage	3.675 ton
Length	5,32 m
Width	1,74 m
Height	2,47 m
Weight	3845 kg

ACCESSORIES

- Hammer NPK PH1 (2,5 - 3,5 ton)
- Hammer NPK PH2 (3,5 - 5,5 ton)
- Ground driller Ø23, 30 or 38 cm
- Fuel tank 1100 l with pump
- Synthetic ramps



Diesel engine

Delivered with buckets: width 40 cm, 60 cm (with teeth) and 140 cm.

If you have any questions about this machine or any accessory, please call us at +32(0)56 222 111 or send us an email.

There will be a cleaning and environmental charge if the machine is returned dirty or full of mud.

- * All prices are VAT excluded.
- * A deposit may be requested.



Duma Rent bvba - Torkonjestraat 23, BE-8510 Marke
T +32(0)56 222 111 • Fax +32(0)56 716 141
info@dumarent.be • www.dumarent.be

Region West-Flanders
056 222 111

Region East-Flanders
09 228 28 22

Region Antwerp
03 887 87 81

Region Brussels
02 705 05 09

Region Charleroi
071 33 36 38