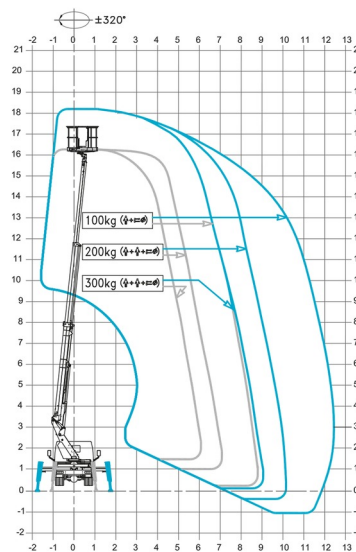




TRUCK MOUNTED PLATFORM

# RENAULT - CTE B18

Hydraulic platforms and scissor lifts

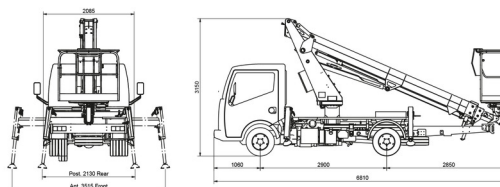


» RENAULT - CTE B18

Working height	18,00 m
Loading capacity	300 kg
Length	6,81 m
Width	2,09 m
Height	3,15 m
Weight	3450 kg

ACCESSORIES

- Operator - CAT 1



- 1 socket in working platform
- Diesel engine
- Platform load indoors: 2 persons
- Platform load outdoors: 2 persons
- 4 Automatic Stabilisers

Variable stamping - with aluminium or polyester work cage - license B - with airconditioning

Consult our website [www.dumarent.be](http://www.dumarent.be) for the technical data sheet

If you have any questions about this machine or any accessory, please call us at +32(0)56 222 111 or send us an email.

There will be a cleaning and environmental charge if the machine is returned dirty or full of mud.

\* All prices are VAT excluded.  
\* A deposit may be requested.

**duma rent**  
on different places !

Duma Rent bvba - Torkonjestraat 23, BE-8510 Marke  
T +32(0)56 222 111 • Fax +32(0)56 716 141  
info@dumarent.be • www.dumarent.be

Region West-Flanders  
**056 222 111**

Region East-Flanders  
**09 228 28 22**

Region Antwerp  
**03 887 87 81**

Region Brussels  
**02 705 05 09**

Region Charleroi  
**071 33 36 38**