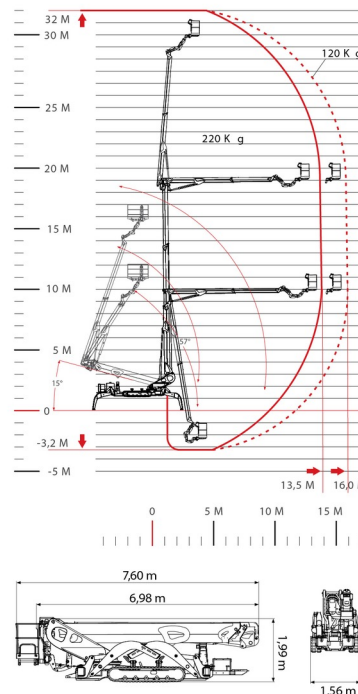


AERIAL WORK PLATFORM

CMC S32



Hydraulic platforms and scissor lifts



» CMC S32

Working height	32,00 m
Loading capacity	220 kg
Length	7,60 m
Width	1,56 m
Height	1,99 m
Weight	7240 kg

ACCESSORIES

- Operator - CAT 1
- Synthetic ramps

- 4 Automatic Stabilisers
- 1 socket in working platform
- Radiographic remote control
- Platform load indoors: 2 persons
- Platform load outdoors: 2 persons
- Diesel engine + electric engine

Non-marking / width cage included = 1,70 m / variable stamping / negative up to -3,2 m

Consult our website www.dumarent.be for the technical data sheet

If you have any questions about this machine or any accessory, please call us at +32(0)56 222 111 or send us an email.

There will be a cleaning and environmental charge if the machine is returned dirty or full of mud.

- * All prices are VAT excluded.
- * A deposit may be requested.

duma rent
on different places !

Duma Rent bvba - Torkonjestraat 23, BE-8510 Marke
T +32(0)56 222 111 • Fax +32(0)56 716 141
info@dumarent.be • www.dumarent.be

Region West-Flanders
056 222 111

Region East-Flanders
09 228 28 22

Region Antwerp
03 887 87 81

Region Brussels
02 705 05 09

Region Charleroi
071 33 36 38