

# 966H

## Wheel Loader



### Engine

Engine Model	Cat® C11 ACERT™	
Gross Power – SAE J1995	213 kW	286 hp
Net Power – ISO 9249	195 kW	262 hp

- Caterpillar engine with ACERT™ Technology – EPA Tier III, EU Stage III Compliant

### Buckets

Bucket Capacities	3.4-4.2 m <sup>3</sup>	4.5-5.5 yd <sup>3</sup>
-------------------	------------------------	-------------------------

### Weights

Operating Weight	23 698 kg	52,254 lb
------------------	-----------	-----------

- For 4.25 m<sup>3</sup> (5.5 yd<sup>3</sup>) general purpose bucket with BOCE

### Operating Specifications

Static Tipping Load, Full Turn	15 474 kg	34,120 lb
--------------------------------	-----------	-----------

- For 4.25 m<sup>3</sup> (5.5 yd<sup>3</sup>) general purpose bucket with BOCE



## Engine

Engine Model	Cat® C11 ACERT™	
Gross Power – SAE J1995	213 kW	286 hp
Net Power – ISO 9249	195 kW	262 hp
Net Power – SAE J1349	193 kW	259 hp
Net Power – 80/1269/EEC	195 kW	262 hp
Peak Torque (Net) @ 1,400 rpm	1215 N•m	896 ft-lb
Bore	130 mm	5.12 in
Stroke	140 mm	5.51 in
Displacement	11.1 L	677 in <sup>3</sup>

- Caterpillar engine with ACERT™ Technology – EPA Tier III, EU Stage III Compliant
- These ratings apply at 1,800 rpm when tested under the specified standard conditions.
- Rating for net power advertised based on power available when the engine is equipped with alternator, air cleaner, muffler and on-demand hydraulic fan drive at maximum fan speed.

## Weights

Operating Weight	23 698 kg	52,254 lb
------------------	-----------	-----------

- For 4.25 m<sup>3</sup> (5.5 yd<sup>3</sup>) general purpose bucket with BOCE

## Buckets

Bucket Capacities	3.4-4.2 m <sup>3</sup>	4.5-5.5 yd <sup>3</sup>
Max Bucket Capacity	4.2 m <sup>3</sup>	5.5 yd <sup>3</sup>

## Operating Specifications

Static Tipping Load, Full Turn	15 474 kg	34,120 lb
Breakout Force	188 kN	42,300 lb

- For 4.25 m<sup>3</sup> (5.5 yd<sup>3</sup>) general purpose bucket with BOCE

## Transmission

Forward 1	6.7 km/h	4.2 mph
Forward 2	12.6 km/h	7.8 mph
Forward 3	22.1 km/h	13.7 mph
Forward 4	37.4 km/h	23.2 mph
Reverse 1	7.4 km/h	4.6 mph
Reverse 2	13.9 km/h	8.6 mph
Reverse 3	24.3 km/h	15.1 mph
Reverse 4	37.4 km/h	23.2 mph

- Maximum travel speeds (26.5-25 tires).

## Hydraulic System

Bucket/Work Tool System – Pump Output	305 L/min	80.6 gal/min
Steering System Pump Type	Piston	
Hydraulic Cycle Time – Raise	5.9 Seconds	
Hydraulic Cycle Time – Dump	1.6 Seconds	
Hydraulic Cycle Time – Lower, Empty, Float Down	2.4 Seconds	
Hydraulic Cycle Time – Total	9.9 Seconds	

- Implement System (Standard), Piston Pump – Rated at 2,100 rpm and 1,000 psi (6900 kPa).
- Cycle time with rated payload

## Brakes

Brakes	Meets required standards.
--------	---------------------------

- Meet OSHA, SAE J1473 OCT90 and ISO 3450-1985 standards.

## Axles

Front	Fixed front	
Rear	Oscillating ± 13°	
Maximum Single-Wheel Rise and Fall	502 mm	19.8 in

## Tires

Tires	Choose from a variety of tires to match your application.
-------	---

- Choice of:
  - 26.5R25, L-2
  - 26.5R25, L-3 (XHA)
  - 26.5R25, L-5 (VSDL)
  - 26.5-25, L-3 (SRG, SHRL)
  - 750/65R25, L-3
- NOTE: In certain applications (such as load and carry) the loader's productive capabilities might exceed the tires' tonnes-km/h (ton-mph) capabilities. Caterpillar recommends that you consult a tire supplier to evaluate all conditions before selecting a tire model. The 26.5-25 size range and other special tires are available on request.



<b>Bucket</b>		<b>General Purpose Bucket</b>	
		<b>Bolt-On Edges</b>	
Rated Bucket Capacity (\$)	m <sup>3</sup>	4.25	
	yd <sup>3</sup>	5.50	
Struck Capacity (\$)	m <sup>3</sup>	3.62	
	yd <sup>3</sup>	4.73	
Width (\$)	mm	3220	
	ft/in	10'7"	
Dump Clearance at Full Lift and 45° Discharge (\$)	mm	3086	
	ft/in	10'2"	
Reach at Full Lift and 45° Discharge (\$)	mm	1294	
	ft/in	4'3"	
Reach with Lift Arm Horizontal and Bucket Level (\$)	mm	2737	
	ft/in	9'0"	
Digging Depth (\$)	mm	108	
	in	4.25	
Overall Length	mm	8855	
	ft/in	29'1"	
Overall Height with Bucket at Full Raise	mm	5853	
	ft/in	19'2"	
Loader Clearance Circle with Bucket in Carry Position (\$)	mm	14 720	
	ft/in	48'3"	
Static Tipping Load Straight *	kg	17 394	
	lb	38,354	
Static Tipping Load Full 37° Turn	kg	15 474	
	lb	34,120	
Breakout Force ** (\$)	kN	188	
	lb	42,300	
Operating Weight * (\$)	kg	23 698	
	lb	52,254	

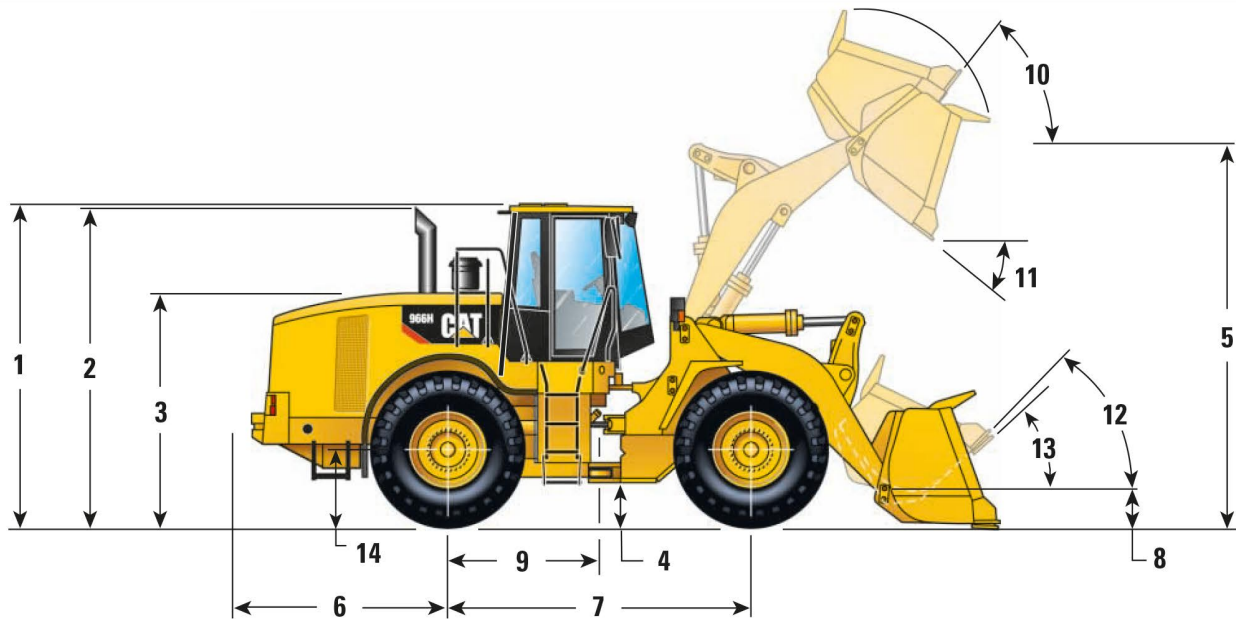
(\$) Specifications and ratings conform to all applicable standards recommended by the Society of Automotive Engineers, including SAE Standard J732C governing loader ratings.

\* Static tipping loads and operating weights shown are based on standard machine configuration with 26.5R25 L-4 Firestone tires, roading fenders, powertrain guard, full fuel tank, coolants, lubricants, air conditioner and operator.

\*\* Measured 102 mm (4.0") behind tip of cutting edge with bucket hinge pin as pivot point in accordance with SAE J732C.

## Dimensions

All dimensions are approximate.



<b>1</b> Height to top of ROPS	3600 mm (11'10")
<b>2</b> Height to top of exhaust pipe	3552 mm (11'8")
<b>3</b> Height to top of hood	2678 mm (8'9")
<b>4</b> Ground clearance with 26.5R25 L-4 Firestone (see tire chart for other tires)	496 mm (1'8")
<b>5</b> B-Pin height	4224 mm (13'10")
<b>6</b> Center line of rear axle to edge of counterweight	2461 mm (8'1")
<b>7</b> Wheelbase	3450 mm (11'4")
<b>8</b> B-Pin height @ carry	507 mm (1'8")
<b>9</b> Center line of rear axle to hitch	1725 mm (5'8")
<b>10</b> Rack back @ maximum lift	60.8
<b>11</b> Dump angle @ maximum lift	45
<b>12</b> Rack back @ carry	47.4
<b>13</b> Rack back @ ground	41.8
<b>14</b> Height to center line of axle	815 mm (2'8")



## Standard Equipment

*Standard equipment may vary. Consult your Caterpillar dealer for details.*

### ELECTRICAL

- Alarm, back-up
- Alternator, 80-amp brushless
- Batteries, Maintenance free (2) 1400 CCA
- Ignition key; start/stop switch
- Lighting system, halogen (6 total)
- Main disconnect switch
- Receptacle, starting, 24-volt
- Starter, electric, heavy-duty
- Starting and charging system (24-volt)

### OPERATOR ENVIRONMENT

- Air conditioner, heater and defroster
- Bucket/work tool function lockout
- Cab, pressurized and sound-suppressed ROPS/FOPS
  - Radio-ready (entertainment) includes antenna, speakers and converter (12-volt, 10-amp)
- Cigar lighter and ashtray (12-volt)
- Coat hook (2) with straps
- Computerized monitoring system
  - Instrumentation, gauges:
    - Digital gear range indicator
    - Engine coolant temperature
    - Fuel level
    - Hydraulic oil temperature
    - Speedometer/tachometer
    - Transmission oil temperature
  - Instrumentation, warning indicators:
    - Axle oil temperature
    - Electrical, alternator output
    - Engine air filter restriction
    - Engine inlet manifold temperature
    - Engine oil pressure
    - Fuel level
    - Fuel pressure, hi/low
    - Hydraulic filter bypass
    - Hydraulic oil level
    - Parking brake
    - Primary steering oil pressure
    - Service brake oil pressure
    - Transmission filter bypass
- Controls, electrohydraulic, lift and tilt function
- Horn, electric (steering wheel/console)
- Light, dome (cab)
- Lunchbox, beverage holders and personal tray
- Mirror, rearview (internally mounted)
- Seat, Cat Comfort (cloth) with air suspension
- Seat belt, retractable, 51 mm (2") wide
- Steering column, adjustable angle (SW-CCS) and length (CCS)
- Wet-Arm wipers and washers, front and rear
  - Intermittent front wipers
- Window, sliding (left and right side)

### POWER TRAIN

- Brakes, full hydraulic enclosed wet-disc with Integrated Braking System (IBS) and brake wear indicator
- Engine, Cat C11 with ACERT™ Technology and ATAAC
- Fan, radiator, electronically controlled, hydraulically driven, temperature sensing, on demand
- Filters, fuel, primary/secondary
- Filters, engine air, primary/secondary
- Fuel priming pump (electric)
- Muffler, sound suppressed
- Radiator, unit core
- Starting aid, ether (ready)
- Switch, transmission neutralizer lockout
- Torque converter, free wheel stator
- Transmission, automatic, planetary powershift (4F/4R)
- Variable Shift Control (VSC)

### OTHER

- Automatic bucket positioner
- Counterweight
- Couplings, Caterpillar O-ring face seal
- Doors, service access (locking)
- Ecology drains, engine, transmission and hydraulics
- Fenders, steel (front and rear)
- Guard, airborne debris
- Hitch, drawbar with pin
- Hood, non-metallic, power tilting
- Hoses, Caterpillar XT™
- Hydraulic oil cooler
- Kickout, lift and tilt, automatic (in-cab adjustable)
- Linkage, Z-bar, cast crosstube/tilt lever
- Oil sampling valves
- Product Link ready
- Remote diagnostic pressure taps
- Service center, electrical and hydraulic
- Sight gauges:
  - Engine coolant
  - Hydraulic oil
  - Transmission oil level
- Steering, load sensing
- Vandalism protection caplocks

### TIRES, RIMS, WHEELS

- A tire must be selected from the mandatory attachments section. Base machine price includes an allowance based on a premium radial tire.

### ANTIFREEZE

- Premixed 50% concentration of Extended Life Coolant with freeze protection to -34° C (-29° F)