

## Technical data

**LEO 30T plus**

**TEUPEN**  
...access redefined

since '77

### PERFORMANCE

|   |                   |
|---|-------------------|
| Working height, max. (300 kg / 400 kg)        | 30,00 m / 27,00 m |
| Working height, max. (both sides narrow)      | 25,00 m           |
| Platform height (300 kg / 400 kg)             | 28,00 m / 25,00 m |
| Platform height, max. ( both side narrow)     | 23,00 m           |
| Horizontal outreach, max. (400 kg)            | 12,70 m           |
| Horizontal outreach, max. (300 kg)            | 14,00 m           |
| Horizontal outreach, max. (80 kg)             | 17,00 m           |
| Horizontal outreach, max. (both sides narrow) | 14,50 m           |
| Platform capacity, max.                       | 400 kg            |
| Platform capacity, max. (both sides narrow)   | 250 kg            |
| Jib, movable                                  | 180 °             |
| Platform, rotatable                           | 180 °             |
| Turntable rotation, max.                      | 450 °             |
| To be jacked up on ground slope of            | 16,7 ° / 30,0 %   |
| Track drive, height- and width-adjustable     | 24 / 22 cm        |
| Gradeability, max.                            | 16,7 ° / 30,0 %   |
| Slope angle, max.                             | 21,0 ° / 38,0 %   |
| Travel speed, max.                            | 3,0 km/h          |

### MEASUREMENTS\*

|   |                 |
|---|-----------------|
| Platform (height) (A)                             | 1,10 m          |
| Platform (length) (B)                             | 1,20 m          |
| Platform (width) (C)                              | 0,80 m          |
| Length (D)  | 7,70 m          |
| Length without platform (E)                       | 7,50 m          |
| Height (F)  | 1,98 m          |
| Width, min. (G)                                   | 1,58 m          |
| Ground clearance, max. (H)                        | 0,43 m          |
| Track (length x width) (I)                        | 1,92 x 0,25 m   |
| Outrigger footprint both side wide (length) (J)   | 5,51 m          |
| Outrigger footprint both side wide (width) (K)    | 5,60 m          |
| Outrigger footprint one side narrow (length) (L)  | 7,55 m          |
| Outrigger footprint one side narrow (width) (M)   | 4,30 m          |
| Outrigger footprint both sides narrow (width) (N) | 2,99 m          |
| Outrigger plate (length x width)                  | 0,31 m x 0,22 m |

### WEIGHT\*

|                                      |                        |
|--------------------------------------|------------------------|
| Total weight                         | 4500 kg                |
| Live load in travelling position     | 4,10 kN/m <sup>2</sup> |
| Live load in working position        | 1,70 kN/m <sup>2</sup> |
| Point load per outrigger plate, max. | 32,00 kN               |

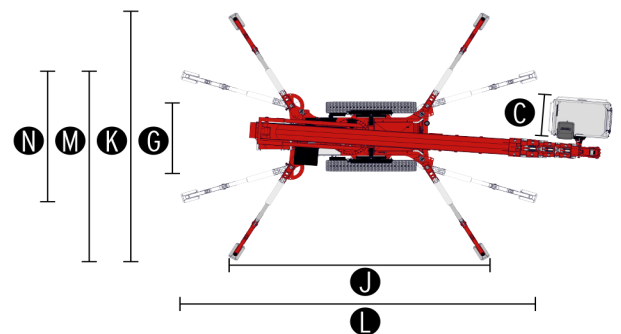
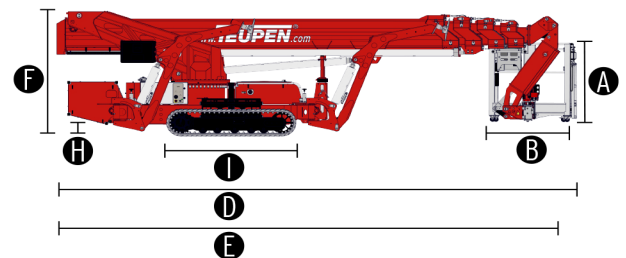
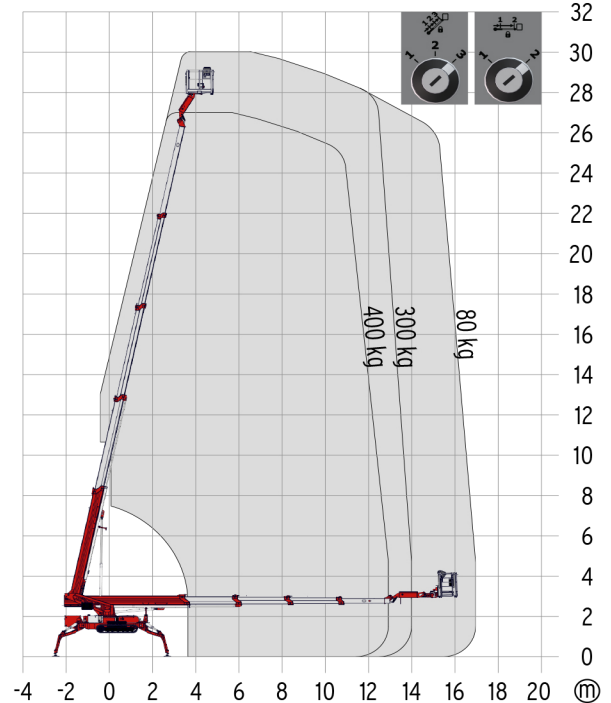
### POWER SOURCES

Standard power sources:

|                                    |                                 |
|------------------------------------|---------------------------------|
| ■ Electric motor                   | (230 V, 12,9 A, 2,2 kW)         |
| ■ Combustion engine (Diesel)       | Kubota D902 (16,1 kW / 21,6 hp) |
| Fuel tank capacity (Diesel engine) | 39,0 l                          |

### POWER SUPPLY

|                        |              |
|------------------------|--------------|
| Electric current, max. | 230 V / 16 A |
|------------------------|--------------|



### STANDARDS

2006/42/EG-Machinery directive  
(Harmonised standard EN280:2016); 2004/108/EG (EMV);  
2000/14/EG (Noise emission directive)

\* The technical data may deviate +/- 3 % from the specified values.  
\* Weight and dimensions may vary depending on options and accessories.