

Self-Propelled Telescopic Booms

S-45 XC

Specifications

| Models | S-45 XC |
|---|---------|
| Measurements | Metric |
| Working height maximum* | 15.56 m |
| Platform height maximum | 13.56 m |
| Horizontal reach maximum | 11.02 m |
| Below ground reach | 1.27 m |
| A Platform length - 8 ft model | 0.91 m |
| Platform length - 6 ft model | 0.76 m |
| B Platform width - 8 ft model | 2.44 m |
| Platform width - 6 ft model | 1.83 m |
| C Height - stowed standard tyres | 2.51 m |
| - stowed with Trax | 2.56 m |
| D Length - stowed | 9.47 m |
| Length - transport | 7.37 m |
| E Width - standard tyres | 2.49 m |
| - Trax option | 2.46 m |
| F Wheelbase | 2.46 m |
| G Ground clearance - center | 0.32 m |
| - centre Trax | 0.30 m |

Productivity

| | |
|--------------------------------------|----------------------|
| Lift capacity, restricted | 454 kg |
| Lift capacity, unrestricted | 300 kg |
| Platform rotation | 160° (80°/80°) |
| Vertical jib rotation | 133° (+79° /-54°) |
| Turntable rotation | 360° continuous |
| Turntable tailswing | 97 cm |
| Drive speed - 4WD stowed (on tyres) | 6.40 km/h |
| Drive speed - 4WD stowed (with Trax) | 4.00 km/h |
| Drive speed - raised or extended | 0.3 m/s |
| Gradeability** stowed - 4WD | 45% |
| Turning radius - inside | 2.08 m |
| - inside with Trax | 2.03 m |
| Turning radius - outside | 5.23 m |
| - outside with Trax | 5.18 m |
| Controls | 12 V DC proportional |
| Tyres - RT foam filled | 315/55D20-12 ply |
| Trax - track system | Vermeer Track system |
| Ground Pressure (with tyres) | 634 kPa |
| Ground Pressure (with Trax) | 152 kPa |

Power

| | |
|-----------------------------|---|
| Power source | Deutz D2011 L03i diesel, 3 cylinder 49hp (37kW) Stage IIIA Deutz TD2.2 L3 turbo diesel, 3 cylinder 49hp (37kW) Stage V |
| Auxiliary power unit | 12 V DC |
| Hydraulic tank capacity | 144 L |
| Fuel tank capacity (Diesel) | 76 L |

Sound & Vibration Levels

| | |
|---|-----------------------|
| Sound pressure level (ground workstation) | 89 dBA |
| Sound pressure level (platform workstation) | 77 dBA |
| Vibration | <2.5 m/s ² |

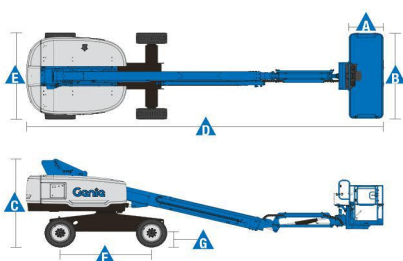
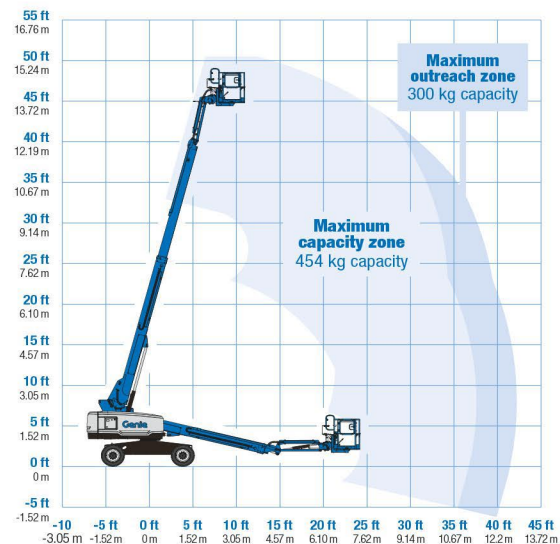
Weight***

| | |
|----------------------|----------|
| CE Foam Filled tyres | 7,394 kg |
| Track system | 7,956 kg |

Standards Compliance

EU Directives: 2006/42/EC - Machinery (harmonized standard EN280:2013+A1:2015); 2004/108/EC (EMC); 2000/14/EC (Outdoor Noise)

Range of Motion S-45 XC



* The metric equivalent of working height adds 2 m to platform height. U.S. adds 6 ft to platform height.
 ** Gradeability applies to driving on slopes. See operator's manual for details regarding slope ratings.
 *** Weight will vary depending on options and/or country standards.