

# Self-Propelled Telescopic Booms

## SX-135 XC

### Specifications

Model	SX-135 XC
Measurements	Metric
Working height maximum*	43.15 m
Platform height maximum	41.15 m
Horizontal reach maximum	27.43 m
Below ground reach	6.00 m
<b>A</b> Platform length	0.91 m
<b>B</b> Platform width	2.44 m
<b>C</b> Height - stowed	3.05 m
<b>D</b> Length - stowed	19.76 m
Length - transport (jib tucked under)	13.28 m
<b>E</b> Width - axles retracted	2.49 m
Width - axles extended	3.94 m
<b>F</b> Wheelbase - axles retracted	4.11 m
Wheelbase - axles extended	4.11 m
<b>G</b> Ground clearance - center	0.38 m

### Productivity

Lift capacity	300 kg / 454 kg
Platform rotation	160°
Vertical jib rotation - up/down	70° / 55°
Turntable rotation	360° continuous
Turntable tailswing - axle retracted	1.14 m
Turntable tailswing - axle extended	1.70 m
Drive speed - stowed	4.3 km/h
Drive speed - out of stowed	0.65 km/h
Gradeability - stowed**	35%
Turning radius - axle retracted: inside	8.03 m
outside	9.96 m
Turning radius - axle extended: inside	2.90 m
outside	6.17 m

Controls	12 V DC proportional
Tyres	445D50/710HD

### Power

Power source	Deutz TD2.9 L4, 74 hp (55 kW), Stage IIIB Deutz TD2011L04i, 74 hp (55 kW), Stage IIIA Perkins 854F-E34T, 74 hp (55 kW), Stage IIIB Perkins 1104D-44T, 74 hp/83 hp (55 kW/62 kW), Stage IIIA
Auxiliary power unit	12 V DC
Hydraulic tank capacity	227 L
Fuel tank capacity	151 L

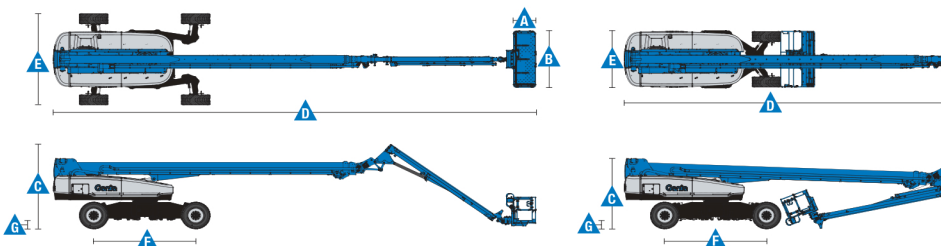
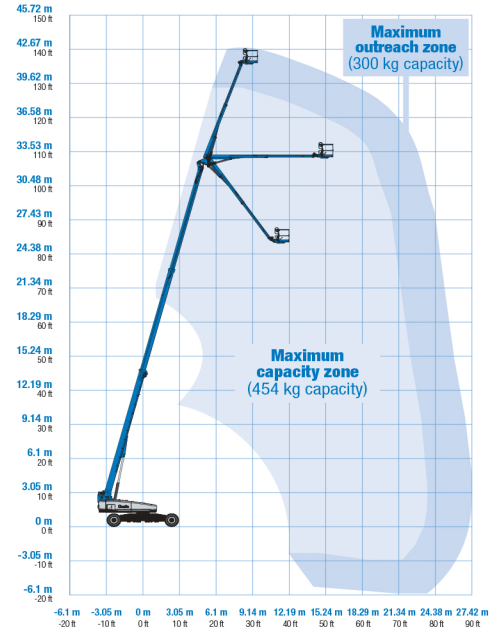
### Weight\*\*\*

4WD	21,546 kg
-----	-----------

### Standards Compliance

EU Directives: 2006/42/EC - Machinery Directive  
Harmonized Standards: EN280;  
2014/30/EU (EMC); 2000/14/EC (Outdoor Noise)

### Range Of Motion SX-135 XC



\* The metric equivalent of working height adds 2 m to platform height. U.S. adds 6 ft to platform height.

\*\* Gradeability applies to driving on slopes. See operator's manual for details regarding slope ratings.

\*\*\* Weight will vary depending on options and/or country standards.